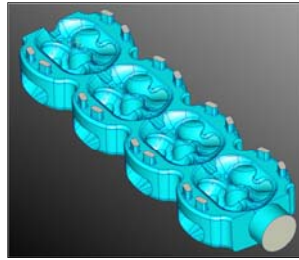
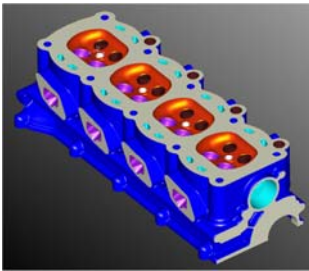
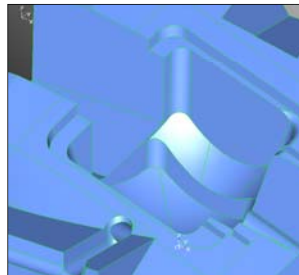
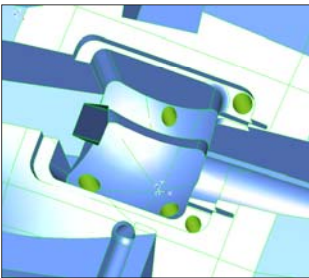


Zusatzmodul: Geometrievereinfachung (Simplifikation)



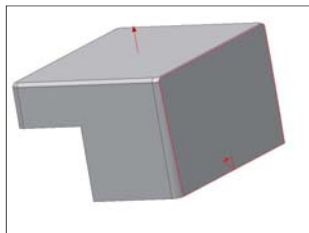
Extraktion von Hohlräumen

- Kühlsystem
- Strömungsmodell

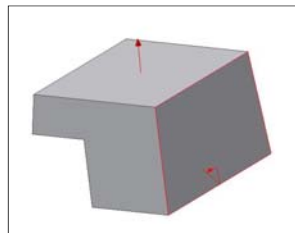


Entfernung von Geometrie
(z.B. zur Programmierung)

- Auswerferlöcher
- Erodiergeometrie



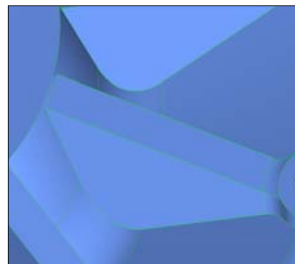
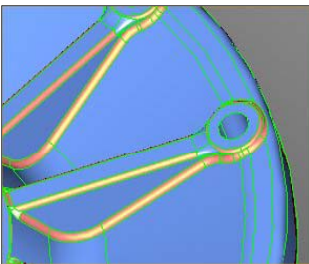
Konik falsch, Radien stören



Radien entfernt, Konik anbringen

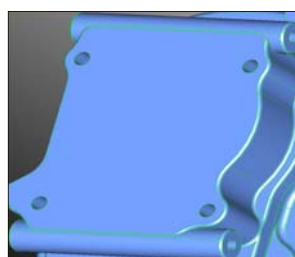
Entfernung von Radien

- Zum leichten Anbringen von Konik an Importdaten



Entfernung von Radien

- Zur Simulation



Entfernung von Erhebungen
(z.B. zur Simulation)

- Beschriftungen
- Datumstempel etc.